



### SKYLINE CUSTOMER SATISFACTION

Skyline customer satisfaction is more than just a promise. We believe you deserve quality in every aspect of ownership. To ensure your continued satisfaction, we're dedicated to providing you with a quality product along with the very best service available in our industry. Skyline's "Commitment of Excellence" will be a source of pride and satisfaction for you. Contact your Skyline Dealer for details.

# KOALA Super Lite 2012

## Travel Trailers & Fifth Wheel



### SOLID CONSTRUCTION



#### DURABLE, ONE-PIECE RUBBER ROOF

12-year manufacturer's limited warranty. U.V. ray resistant. Provides complete, watertight seal.



#### SHAKE SIMULATOR

A shake-simulator test is performed for 10 minutes to detect any problems before leaving the factory.



#### WATERTIGHT TESTED

All units are tested for 15 minutes in a high-pressure shower spray to guarantee that they are watertight.



#### ACTUAL WEIGHTS, NOT ESTIMATED WEIGHTS

For your safety and peace of mind, Skyline weighs every recreational vehicle at the factory. Other manufacturers use estimated weights which can be in error by as much as 20 percent. Insist your recreational vehicle includes an actual weight next to the entry door.

### NO-NONSENSE WARRANTY

Manufacturing defects reported to Skyline within one year after original retail delivery of your new Travel Trailer by an authorized dealer will be corrected without charge and within reasonable times. Excluded are misuse (including lack of reasonable maintenance), minor imperfections, alterations, and dealer or owner improper transportation, installation, or hookup.

This warranty gives you specific legal rights. You may have other rights which vary from state to state.

Skyline's suppliers often provide additional warranties on their components beyond the Skyline factory bumper-to-bumper warranty. For example — the range, water heater, furnace, converter, air conditioner, refrigerator, microwave and awning carry two-year supplier warranties. The one-piece roof carries a 12-year warranty. Ask your dealer for full details.

**Manufacturer's Notice:** All specifications, equipment, and prices are subject to change without prior notice. Production of all models subject to seasonal scheduling. Skyline Corporation reserves the right to improve a model without incorporating these changes in similar models produced at an earlier date.

Consult your automobile dealer and your recreational vehicle dealer to assure the proper match between tow vehicle and trailer. Tow vehicle and recreational unit must be properly equalized for efficient product performance and safety. Before you purchase your recreational vehicle, carefully consider the number of people it will accommodate and its end use. Manufacturer's load capacity restrictions and recommendations must be followed for safe and efficient product performance.

Your Retailer, an independent contractor, who is not an agent of Skyline Corporation, is the party responsible for your purchase contract and any additions, deletions, alterations, or attachments made to or in your recreational vehicle.



Skyline's exclusive Tow-Lite Technology is the use of ultra lite-weight materials to assemble a more aerodynamic trailer which may be towed by smaller, more fuel-efficient vehicles than conventionally-constructed trailers.



Go RVing



For the name of your nearest Skyline-built RV dealer, call:  
Elkhart, Indiana 1-877-908-1552

Or visit us at our Web Site at [www.skylinecorp.com](http://www.skylinecorp.com)

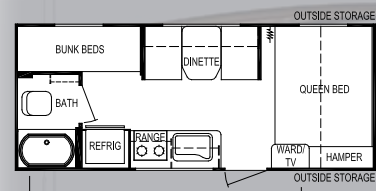


Effective May 2011

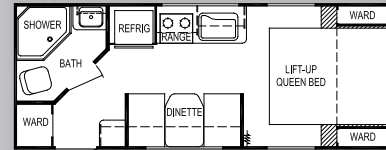
Your local **KOALA Super Lite** dealer is:

# Travel Trailers

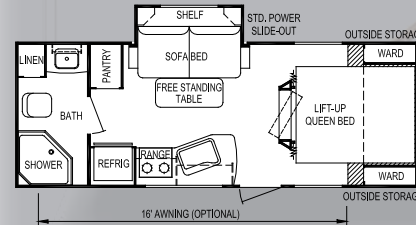
# Fifth Wheels



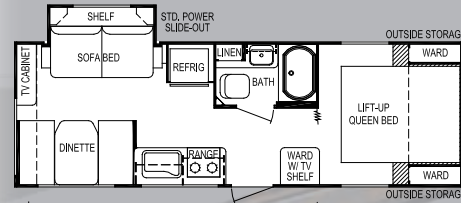
Model 18BH



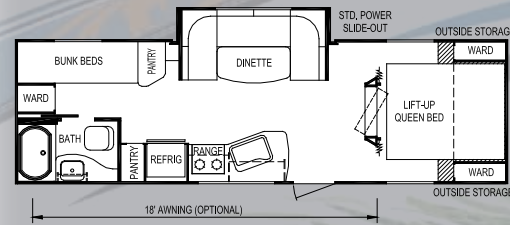
Model 19RB



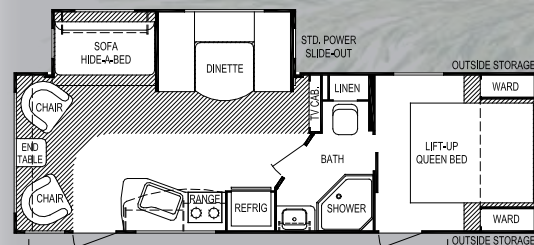
Model 21CS



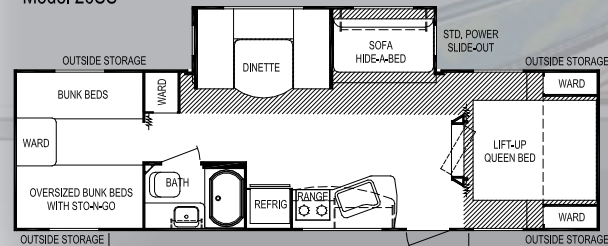
Model 23CS



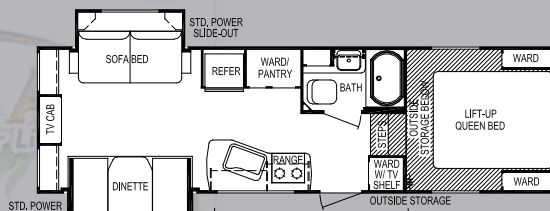
Model 25DS



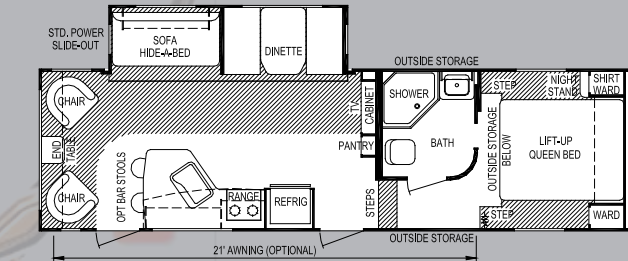
Model 26SS



Model 29SS



Model 27CDS



Model 30SS

## Standard Features

### Interior

#### Cabinets

- Decorative Glass Cabinet Door Inserts in Select Areas
- Full Extension Ball Bearing Drawer Guides & Hardwood Plywood Drawer Sides
- Hardwood Frame Cabinet Doors
- High Pressure Laminate Plywood Backed Counter Tops
- Honey Strand Bamboo Wood Grain Panel Color
- Solid Lightweight Lumber Core Cabinet Stiles w/Screwed-Together Joints

#### Decor

- Color-Coordinated Designer Interiors
- No Wax Embossed Vinyl Flooring
- Night Shades at All Windows Except Kitchen & Bunks
- Attractive Designer Window Valances & Lambrequins
- Oil Rubbed Bronze Accent Lights in Bedroom & Bath
- Plush Upholstery Fabric w/Stylish Accent Fabrics

#### Kitchen & Living Room

- Dometic® Double Door Refrigerator
- Wedgewood® 3-Burner Range w/Oven & Piezo
- Large Counter Top w/Sweeping Radius
- Power Range Hood w/Light
- Black Acrylic Kitchen Sink w/Extra Large Bowl
- High Rise Oil Rubbed Bronze Faucet
- Decorative Backsplash / Wall Border Behind Kitchen Counter
- 120 Volt to 12 Volt 55 amp Power Converter & Battery Charger
- Jack Digital HDTV TV Antenna w/

- Booster
- Park Cable Hookup for TV
- 12 Volt AM/FM/DVD/MP3 Stereo w/iPod Connection, Interior & Exterior Speakers
- Six Gallon Gas/DSI Water Heater
- Monitor Panel

### Bedroom & Bath

- Color Coordinated Quilted Bedspread
- Deluxe Headboard
- Lift-Up Bed Storage w/Gas Piston Struts
- Evergreen® Mattress
- ABS Tub or Shower w/Full ABS Wall Surround
- Neo-Angle Glass Shower Enclosure (Models 19RB, 21CS, 26SS & 30SS)
- Thetford® Foot-Flush Toilet
- Deluxe Medicine Cabinet w/Mirror & Vanity Light
- Towel Ring, Towel Bar & Toilet Paper Holder
- Skylight Over Shower

### Exterior

#### Roof Construction

- Aluminum Frame, Fully Laminated Roof (90" Wide Models)
- Seamless One-Piece Roof w/12 Year Manufacturer's Warranty
- Awning Drip Rail & Down Spouts
- Lightweight Galvanized Steel Roof Trusses, 16" O.C., w/Ducted A/C (96" Wide Models)

#### Wall Construction

- Welded Aluminum Frame Sidewalls & Endwalls
- Laminated Construction w/Block Foam Insulation, Steel Cabinet Backers & Latest Technology Substrates
- Radius Corner Dark Tint Safety Glass Clamp Ring Windows
- Flush Mount Heavy Duty Exterior Trunk Doors w/Continuous Hinge
- Patio Convenience Light
- Radius Black Frame Entry Door w/Screen
- Assist Handle at Entry Door
- Lamilux® 4000 Fiberglass Exterior w/Silver-Gray Metallic High Gloss Finish

#### Chassis Construction

- Cambered Steel Chassis w/Steel Outriggers
- Sewer Hose Carrying Bumper
- Battery Rack
- Electric Brakes on All Wheels
- Goodyear® Radial Tires w/Trendy Aluminum Wheels

- Super Lube Hubs on Axles
- Equa-Flex® Suspension Equalization
- Safety Chains & Breakaway Safety Switch
- Four Stabilizer Jacks (Two on Fifth Wheel)

#### Floor Construction

- Laminated Floor Construction w/Welded Aluminum Frame, Block Foam Insulation & Plywood Decking
- Tightly Sealed Woven Polyethylene Underbelly

#### Features

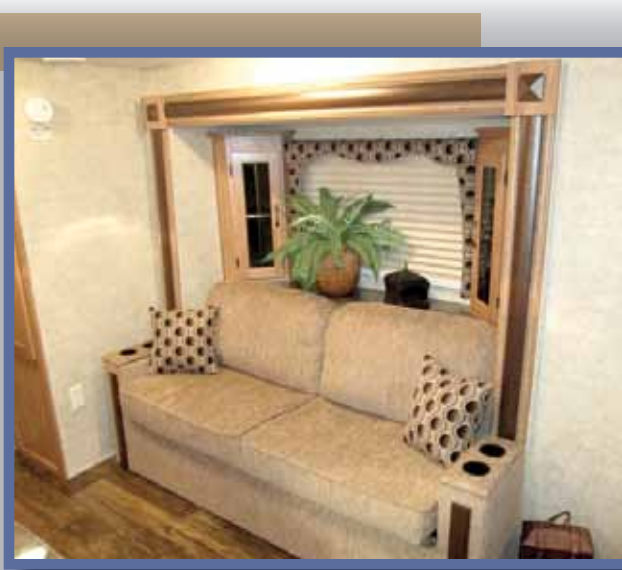
- Two 30 lb. LP Propane Tanks w/Auto Changeover
- Holding Tanks w/Drain Outlet
- Water Heater Bypass
- Under-Floor Water Tank for Better Weight Distribution & To Maximize Interior Storage
- Exterior Hitch Light
- Exterior Patio Receptacle
- Molded High Impact ABS Fender Skirt
- 30 amp Power Shore Line

### Security & Safety

- Smoke Detector
- Propane Leak Detectors
- Carbon Monoxide Alarm
- Flush Door Latch w/Integral Dead Bolt Lock
- Fire Extinguisher

#### Popular Options

- Power Side Awning
- Fireplace (Select Models)
- 26" LCD TV
- Aussie Package**
  - 13,500 Btu Roof Air Conditioner
  - Large Carousel Dometic® Microwave Oven w/Clock
  - Spare Tire Kit
  - Enclosed Underbelly
  - A&E® 8500 Series Color-Coordinated Side Awning
  - Gas/Electric DSI Water Heater
  - Outside Shower
  - Folding Entry Assist Handle
  - Propane Quick Disconnect on Door Side



# KOALA Super Lite

## Specifications

Model	18BH	19RB	21CS	23CS	25DS	26SS	29SS	27CDS	30SS	
<b>Weights</b>	Unloaded Vehicle Weight (see Note 2)	2,875	3,375	3,450	3,675	4,100	4,875	5,675	6,000	
	Dry Hitch Weight	350	375	425	500	600	675	700	1,400	
	Dry Axle Weight	2,525	3,000	3,025	3,175	3,500	4,200	4,975	4,600	
	GVWR (Total Capacity of Trailer)	4,950	4,950	4,950	5,940	5,940	7,750	7,750	6,700	9,600
<b>Accommodations</b>	Carrying Capacity (see Note 2)	1,925	1,425	1,325	2,075	1,650	2,650	1,825	3,350	
	Sleeping (standard / optional)	5	3	4	6	6	6	9 / 10	6	6
<b>Measurements</b>	Bed Size	60" x 74"	60" x 74"	60" x 74"	60" x 74"	60" x 74"	60" x 74"	60" x 74"	60" x 74"	
	Second Bed Size	(2) 28" x 76"	N/A	N/A	N/A	(2) 26" x 76"	N/A	(2) 28" x 76" (2) 38" x 74"	N/A	N/A
	Dinette Size	33" x 70"	33" x 70"	N/A	40" x 71"	44" x 90"	48" x 79"	48" x 79"	40" x 71"	40" x 71"
	Sofa	N/A	N/A	42" x 64"	42" x 64"	N/A	44" x 74"	44" x 74"	42" x 64"	48" x 74"
<b>Capacities</b>	Exterior Length (see Note 3)	21'-9"	22'-9"	24'-1"	26'-6"	28'-11"	29'-3"	32'-4"	27'-6"	31'-2"
	Exterior Width (see Note 3)	90"	90"	90"	90"	90"	96"	96"	90"	96"
	Exterior Height (see Note 3)	9'-8"	9'-8"	9'-8"	9'-8"	9'-8"	10'-8"	10'-8"	10'-4"	12'-1"
	Interior Height	76"	76"	76"	76"	76"	78"	78"	76"	84"
<b>Capacities</b>	Fresh Water System (gallons)	42	42	42	42	42	42	42	42	
	Gray Water Tank (gallons)	40	40	40	40	40	40	40	80	
	Black Water Tank (gallons)	40	40	40	40	40	40	40	40	
	Air Conditioner Size (Btu; Opt.)	13,500	13,500	13,500	13,500	13,500	13,500	13,500	13,500	13,500
<b>Capacities</b>	Awning Size (Opt.)	14'	14'	16'	15'	18'	21'	18'	10'	21'
	Converter Size (amps)	55	55	55	55	55	55	55	55	55
<b>Capacities</b>	Furnace Rating (Btu)	18,000	18,000	18,000	25,000	25,000	25,000	25,000	25,000	25,000
	Propane Gas Capacity (pounds)	60	60	60	60	60	60	60	60	60
<b>Capacities</b>	Tires	ST205/75R14-C	ST205/75R14-C	ST205/75R14-C	ST205/75R14-C	ST205/75R14-C	ST205/75R15-C	ST205/75R15-C	ST205/75R14-C	ST225/75R15-D
	Water Heater (gallons)	6	6	6	6	6	6	6	6	6

**Notes**  
 (1) All weights, dimensions, and capacities shown are approximate values.  
 (2) Unloaded vehicle weight and carrying capacity will vary depending upon optional equipment. Full propane tanks are factored into carrying capacity. Skyline weighs every unit at the factory. See trailer weight information label located inside the front entry door for specific unloaded vehicle weight and cargo carrying capacity.  
 (3) Dimensions stated to industry standards. Exterior length includes approximately a four foot hitch on travel trailers. Exterior height includes air conditioner, if installed. Exterior width does not include the width of the awning, if installed.